

GeoElections News

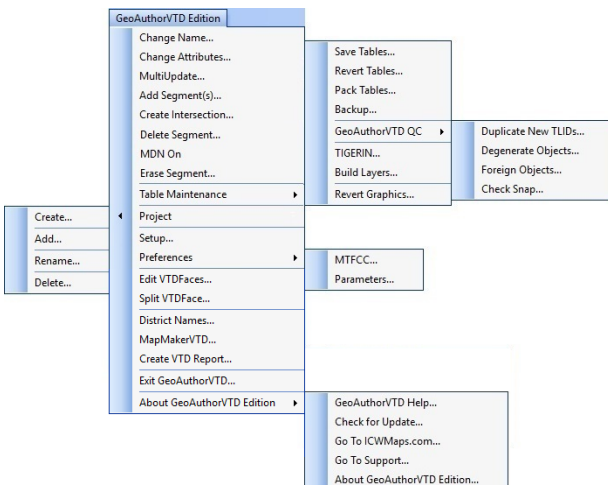
Dec 2017 ♦ Temple Terrace, FL ♦ www.icwmaps.com

VOL. 14 NO.5 - ★★★ \$.50

The New VTD Partnership Shapefiles Now Available

The screenshot shows a web browser window displaying the Census.gov website. The address bar shows the URL <https://www.census.gov/geo/maps-data/data/partnership.htm>. The page title is "Partnership Shapefiles - Ge...". The page content includes the United States Census Bureau logo, a search bar, and a breadcrumb trail: "You are here: [Census.gov](#) > [Geography](#) > [Maps & Data](#) > Partnership Shapefiles". The main heading is "Geography", with a navigation menu containing "Main", "About", "Maps & Data", "Reference", "Partnerships", "Education", "Research", "GSS-I", and "Contact Us". The "Maps & Data" section is active, showing a sidebar with "Maps & Data Main Page" and "Maps" (Census Data Mapper, Reference, Thematic, Maps Available for Purchase). The main content area is titled "Partnership Shapefiles" and contains the text: "The Partnership Shapefiles are used in our partner programs to share data with and capture data from our partners. Please select your program below to begin downloading data: [Note on Special Characters Not Displaying Correctly](#)". A green banner reads "2018 Partnership Shapefiles for the 2018 BAS and the VTD Annotation Phase". Below this, it states: "Use these shapefiles for the 2018 Boundary and Annexation Survey (BAS) and for the Voting District (VTD) Annotation phase." It further explains: "The shapefiles reflect the legal boundary of governments effective as of January 1, 2017. Please note that these shapefiles begin with the prefix PVS_17_v2. To download shapefiles, please select the state or state equivalent that you would like to download shapefiles for:". A dropdown menu labeled "Select a State" and a "GO" button are visible.

The 2017-18 Version 2 files are available from the Census website displayed above. Alternatively, one can go to <ftp://ftp2.census.gov/geo/pvs/> and download files from the FTP site. The easiest location for those interested in five or fewer files is <https://www.census.gov/geo/maps-data/data/partnership.html>.



Florida training session for GeoAuthorVTD Edition, 12/08/2017. Using the menus to the left and the functionality of Bing Aerials and reference files from shp, dwg, dgn, etc. makes any level of participation easier for the end-user.

ICW, where imagination and geography converge.



International Computer
Works, Inc.



Step up to greater speed and performance.

Use GeoAuthorVTD Edition and MapInfo Pro to participate in the VTD Phase Two Census Redistricting Data Exchange Program.

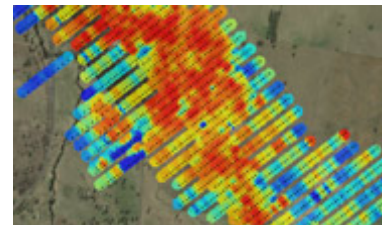
Pitney Bowes is teaming up with ICW to provide any participant in the US Census VTD Phase Two Program with a 90 day evaluation license of MapInfo Pro for use with GeoAuthorVTD Edition software from ICW. This marks the 3rd decade ICW has provided tools for the decennial data exchange programs offered by the US Census Bureau.

See what you're missing right now.

With **GeoAuthorVTD Edition** and **MapInfo Pro** you can perform all of the Phase II edits allowed by the US Census Bureau in :

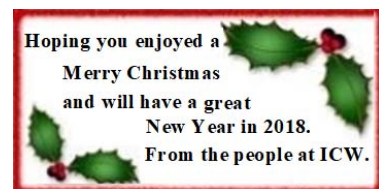
- Add missing features and correct feature names.
- Correct legal boundaries using the Face Split function, also for Landmark areas and Hydrography as needed.
- Define your VTDs to preserve block boundaries in the 2021 TIGER/Line Shapefiles.
- Add landmark areas and hydrography with ease.
- Get the most out of this once in a decade opportunity.

Visit www.icwmaps.com or call 813-988-0434 today to obtain your free versions of GeoAuthorVTD Edition and 90 day license for MapInfo Pro. Be a participant in the VTD Phase Two Data Redistricting program offered by the US Census Bureau.



Contact ICW today to get started with your 90 day evaluation of MapInfo Pro.

"It all begins with the map."



ICW, where imagination and geography converge.