

Introducing GeoBuilder[®]



From One Map Source
Coordinate dispatch, AVL and desktops leveraging your investment.

GeoBuilder[®] and **GeoBuilderDTG[®]** powered by MapInfo Professional and the ICW editors bring the full functionality offered by Geographic Information Systems (GIS) to the process of creating and managing geofiles for Computer Aided Dispatch (CAD). While offering the ability to **integrate** with existing GIS and **interoperate** with existing CAD installations, the ease-of-use by design makes this a reality for agencies of all sizes.

Solutions based upon tried and true methods and tools, proven with end-user success represent the basis of the application we want to introduce into your organization. Capabilities such as:

- Maintain one base map and database for multi-user applications
- Easy-of-use functionality with intuitive menu options
- Rapid creation and maintenance of geofiles from streets to boundaries
- Authoring interface for MSAG
- Map layer building for roads, water, grids, response zones, etc.
- Build map layers from the database for other map based applications:
- District maps including but not limited to the following:
 - All Roads
 - State and County Roads
 - US Highways
 - City Council Districts
 - Airports and Railroads
 - Grids
 - Municipal and County boundaries
 - Grids, Beats, Regions, Zones, etc.
 - Wards, Tow Zones, etc.
 - Census Tracts and ZIP Codes

Designed for ease-of-use in strategic planning, economical because of the alternative base maps supported including TIGER/Line Files or GIS data provided by local departments (i.e. roads, water, etc.).

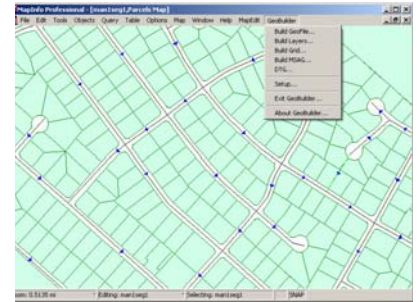
The two versions offer the use of alternative base maps:

GeoBuilder[®]

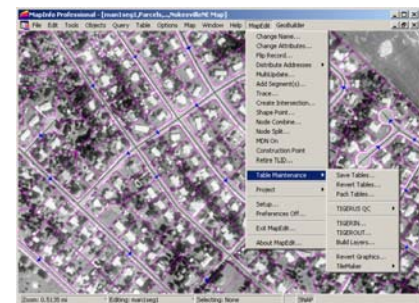
1. Create a project using the TIGER/Line Files as the base map.
2. Use the editing tools to correct street names, address ranges, add missing streets, etc..
3. Use the census blocks as atomic polygons and define agency boundaries.
4. Split blocks as necessary to define layers such as map book pages.
5. Run **GeoBuilder[®]** to create the geofile

GeoBuilderDTG[®]

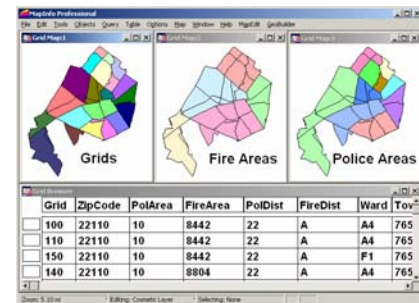
1. Two steps to edit ready:
 - A. Create a project
 - B. Import the externally created GIS data and run **DTG**
2. Use base maps of roads, water, municipal boundaries, etc. from existing GIS databases created by other agencies such as planning, county GIS, etc.
3. Use the editing tools to modify the base map layers as necessary.
4. Create boundaries and grid.
5. Run **GeoBuilder[®]** to create the geofile.



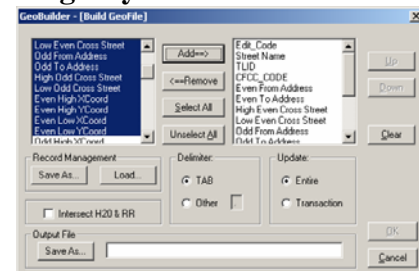
Easy-to-use Mapping



Use Parcels, Aerials, etc



Use Atomic Polygons to define boundaries for each agency included in CAD.



Intuitive menus to guide the user through each step.

GeoBuilder[®] and GeoBuilderDTG[®] integrates GIS with CAD.

Creating a geofile for your dispatch system from your mapping system just became a whole lot easier.

GeoBuilder[®] from **International Computer Works, Inc. (ICW)** is an add-on application module that works with MapInfo Professional and **ICW** map editors. After your map has been updated with the **ICW** map editing utility, you create a grid table with either the native MapInfo tools or if you choose to use the US Bureau of the Census TIGER/Line Files as your base, you may use the block tables as the grid. The assignments for police response, fire response, EMS, ambulance, animal control, and any other agency are maintained as attributes to each grid. Through the use of the grid, you can manage any changes to assignments or modification to jurisdictions.

GeoBuilder[®] will use the grid and the updated map to create a geofile. The user is presented with a single easy-to-use dialog box from which the items to be included in the geofile can be specified. From the same dialog box you can define the order of occurrence for each variable in the ASCII text file.

GeoBuilder[®] runs in any of the current Windows platforms for use with MapInfo Professional. The use of **GeoBuilder[®]** is described in a fully illustrated easy to understand user manual.

GeoBuilder[®] was developed in MapBasic and operates within the MapInfo Professional environment. As a MapBasic application, **GeoBuilder[®]** appears on the MapInfo menu bar as a native menu option within MapInfo. This flexibility has allowed **ICW** the ability to integrate **GeoBuilder[®]** as a seamless application to compliment the power of MapInfo for use with the any of our map editing applications.

After you have defined the record layout from the available information and the sequence of the information in the resulting ASCII text file, you can save this description for recall. With **GeoBuilder[®]**, you can create a new geofile on demand.

GeoBuilderDTG[®] was developed to provide a means for agencies to use GIS data (principally street data) developed by local departments such as county or city GIS departments with which to build a geofile. The goal of this strategy is to minimize the mapping effort that might otherwise be required on the behalf of the dispatching agency and be positioned to use updates from the original authoring agency when available.

The grid can be built using the development tools in MapInfo Professional or from externally provided data, but in either case must be constructed to align with the geometry of the road network.

GeoBuilder[®] is easy to learn and use. It executes rapidly on even the largest files. Call, write or visit <http://www.icwmaps.com> for more information.