

# Introducing GeoElections® Integrated Mapping



We empower the people who manage the elections process.

**GeoElections® powered by MapInfo® Professional** brings the ease-of-use offered by Geographic Information Systems (GIS) to the elections office providing a critical decision support application.

The GIS solution designed for elections providing the ability to **integrate** with existing GIS and **interoperate** with voter registration systems to accurately update street addresses and geopolitical boundary assignments.

**Built upon experience to deliver tools and methodology**, proven with decades of end-user success, **GeoElections®** is engineered to provide your staff with the means to excel with features such as:

- WebElections™ publishes election results, reports and precinct maps.
- Geocoding Voters to roads or discrete points.
- Re-precincting
- Automated Precinct Legal Descriptions (terse, medium or verbose)
- Voter Tabulation at the Census Block Level
- Automatic Generation of Voter Street Files
- Publish maps and data to the web with GeoElections WebTools©
- District quality control measures including compactness and contiguity
- District maps including but not limited to the following:

- Precincts
- School Board Districts
- County Commission Districts
- City Council Districts
- Fire Districts
- Townships
- Water Districts
- Special Taxing Districts
- House or Assembly Districts
- State Senate Districts
- Congressional Districts
- Cities, Towns and Villages

**Designed for ease-of-use, GeoElections® is strategically** positioned to help you use the power of GIS data in concert with other ICW applications to address the mission critical needs of your office.

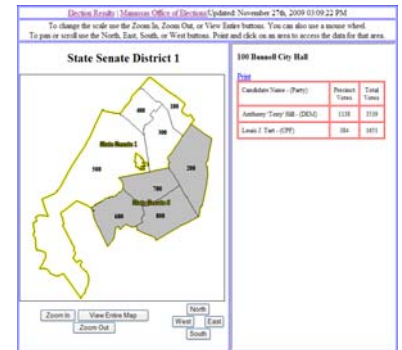
## Re-Precincting Before and After GeoElections®

### Before

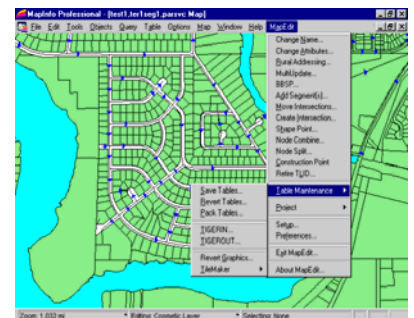
1. Get out maps and markers
2. Draw new lines
3. Make a list of streets in new precinct
4. Search voter file for count of voters on streets
5. Do it all again if you need multiple plans
6. To implement the plan:
  - A. Determine streets to be changed
  - B. Split any streets required
  - C. Manually update the street file
7. Print new voter info cards.

### After

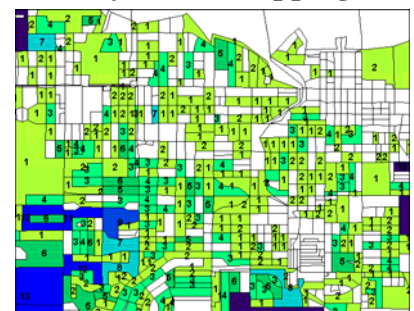
1. Open **GeoElections®**
2. Use re-districting tool to assign blocks or atomic polygons to new precincts
3. Save the plan
4. To implement the plan:
  - A. Load the saved plan
  - B. Export the changes to the voter registration system using either the electronic or paper dictionaries.
5. Print new voter info cards.



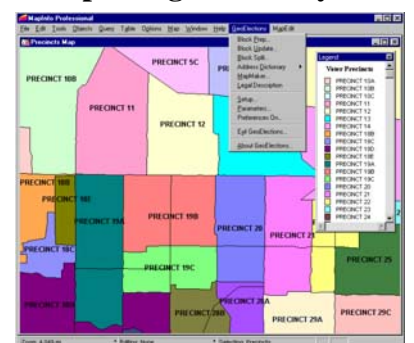
## WebElections Reports At the Precinct Level



## Easy-to-use Mapping



## Reporting and Analysis



## Redistricting

**ICW, where geography and imagination converge.**

# GeoElections®

Feature	Function	Benefit
• <b>Specifically designed for elections</b>	As the name denotes, we combine the power of GIS to help solve the business problems of the elections office.	More direct application of GIS technology than tools designed for general purpose or single purpose applications results in ease-of-use.
• <b>Interoperability with VR</b>	Updates the VR street index from the map as a batch or transactions (i.e. new streets, changes to street names, address ranges, district boundaries, etc.)	Increases VR street index accuracy and success rate while geocoding voters and maintaining a map that matches the VR.
• <b>GeoCoding Engine</b>	Match voters to a location to a street segment or point using the street address, apt, and ZIP code (i.e. 123 Maple St, apt 210, 33617).	Accurate tabulation of registered voters at the Census block level for re-precincting down to the residence.
• <b>Editing TIGER/Line or Shape files</b>	Editing tools for TIGER/Line or Shape files for your county including name changes, adding new streets, correcting street address ranges, ZIP5 Codes, etc.	Update and maintain an accurate and complete inventory of all roads and addresses through an intuitive map interface.
• <b>Maps from TIGER or other GIS Data</b>	TIGERUS© or GeoAuthor® provide tools to edit TIGER or other GIS data to create the perfect map for geocoding GeoElections uses the blocks or atomic polygons to tabulate registered voters and district boundaries that influence ballot style.	Fast and easy integration of districts defined by state and county level governmental entities who have used the PL 94-171 data for redistricting.
• <b>Legal Descriptions</b>	Builds legal descriptions for any of the districts represented in your map	Saves time by automatically creating a textual description of the boundary from the map.
• <b>Paper Dictionary</b>	Generates a text file sorted by ZIP Code or Precinct then Street and Address Range with the Precinct/ZIP for that address.	Provides means to manually check street index in VR and gives poll workers easy means to direct voters to correct polling place.
• <b>Group Code Number</b>	Whether your voter registration system refers to precinct splits as Precinct Parts, Sections, Groups, Partitions, Splits, etc., you may start the numbering at any value from 0 or greater.	Allows you to specify the values for precinct sub-components to match your voter registration software.
• <b>MapMaker</b>	Construct a new table for for any of the district attributes defined in the block table.	Creates different map layers for use in day-to-day desk top mapping to represent the Geo-political boundaries which affect ballot style.
• <b>Redistricting</b>	The demographics of the geocoded voters are tabulated at the block level.	The user can easily create new precincts, commissioner, school board, etc. boundaries while maintaining a demographics on voters or general pop for each boundary.
• <b>WebElections™</b>	Provides the end-user with design tools to build web pages for reporting elections results down to the precinct.	Voters and candidates can view election results across the web as they come into your office and you choose the reporting frequency.
• <b>GeoPackager bundles data and a free viewer on CD with ease for economical distribution</b>	Menu driven tool to gather and package the map layers Elections officials want to distribute on CD. Addresses can be located. All data is accessible with a free viewer.	<b>Runs off distributed CDs. No need to install any software.</b> Great for candidates, schools, etc. and economical.
• <b>Image Maker</b>	Generates jpg files polling place maps.	Great for use on web or mailings.

The above listing is not complete, but does high light some of the major features, functions and benefits of GeoElections®.

---

---

**International Computer Works, Inc.**

111 South Riverhills Drive, Temple Terrace, FL 33617-7221 TEL (813) 988-0434 FAX (813) 985-5661  
www.icwmaps.com