

Introducing GeoPointsSQL[®]



ICW empowers the people who manage 911 databases.

GeoPointsSQL[®] powered by Microsoft SQL Server, MapInfo Professional and support tables from any GIS source bring the ease-of-use offered by GIS to the creation of 911 databases.

ICW brings you a GIS solution designed for 911 database administrators specific to your needs while offering the ability to **integrate** with existing GIS and **interoperate** with existing 911CAD systems.

Designed to manage the creation and maintenance process, GeoPointsSQL[®] brings resources to the range of tasks confronted by both the Administrator and Land Technicians. Including features such as:

- Multi-user application using **MapInfo SQL Server**
- Assign Discrete Addresses for each Addressable Structure
- Automated Data Validation for both **USPS** and **MSAG** Street Names
- Collects author name and date for both Creation and Validation
- Administrative Module for security and Land Technician for data entry
- Automated Data Entry from supporting map layers:

Map Layer

- Parcels
- Section, Township and Range
- ESN and Jurisdiction
- Center Street Lines
- Photo Grid

Function

- Pulls the Folio Number
- Pulls the STR or S-T-R, etc.
- Gathers the ESN and Jurisdiction
- Validates Street Spelling
- Hot links to Aerial Photos

911CAD databases can maximize the benefit of Phase II FCC rules require wireless carriers to provide more precise **ALI**. The X,Y coordinates of the wireless caller can be related to the closest discrete address within the 911CAD database.

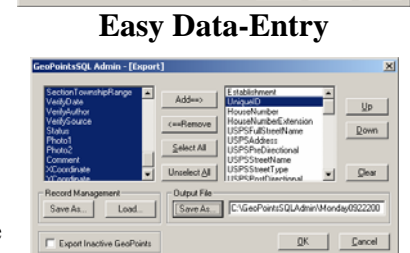
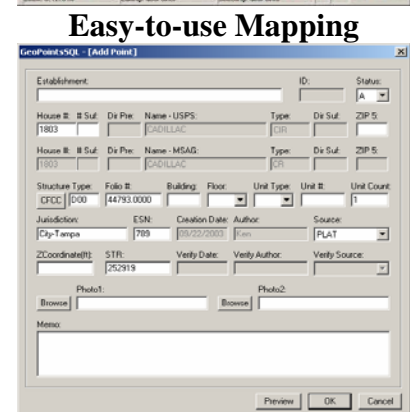
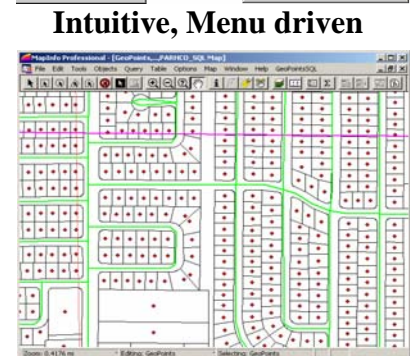
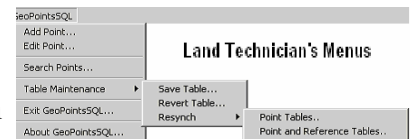
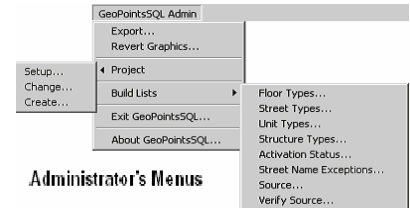
The 911CAD database before and after GeoPointsSQL[®]:

Before

1. Decide upon a system to track street names and addresses either by ranges or discrete locations
2. Get out maps and colored pencils
3. Assign an address and fill out forms
4. Hand the forms to the data entry clerk
5. The data entry clerk then enters the information into a tabular database
6. Export a file to import to your 911CAD database used in dispatch and hope the data can be mapped

After

1. Login to **GeoPointsSQL[®]**
2. Add a point to the map at the center of the parcel or upon a roof top in a photo
3. Select a street the address is associated with and execute the add function
4. Complete the data-entry using the **GeoPointsSQL[®]** form and depress the **OK** button to add the record to both the map and database in one transaction
5. Export to the 911CAD database used in dispatch including the mapped points



Export to 911CAD Database

GeoPointsSQL[®] is a multi-user solution for 911 database admin.