

# Introducing GeoChoice®



Scalable and Modular By Design

**We empower the people who manage the school choice process.**

**TIGERUS®**, **GeoSchools®** and **GeoChoice®** powered by **MapInfo Professional**, and **Microsoft Access or SQL Server** bring the ease-of-use offered by Geographic Information Systems (GIS) to those who manage the school choice process.

**ICW** brings you a GIS solution designed for school choice while offering the ability to **integrate** with existing GIS and **interoperate** with existing school management systems.

**A solution designed for Magnet or Traditional programs**, implemented as a controlled, zoned or open plan, **GeoChoice®** offers centralized control with access for information inquiry and application submittal across the web. **GeoChoice®** includes capabilities such as:

- Multi-user with three levels of access and progressive functionality.
- Parameter driven to allow adaptability for districts with varying needs.
- Uses a street dictionary derived from the GIS to pre-edit data entry.
- Wait list management and lottery pool maintenance alternatives.
- Student records and Choice status available for telephone response.
- District, Zone and Geographic maps including but not limited to:

- Elementary School Boundaries
- Middle School Boundaries
- High School Boundaries
- Walk Zones
- Attendance Districts
- Urban Geography
- Suburban Geography
- Rural Geography
- Zoned or Open Choice Regions
- Priority Zones

**Designed for ease-of-use and parameter driven flexibility**, **GeoChoice®** as a multi-user application offers three levels of user access managed by the Administrator. Each level has increasing functionality including data-entry, report generation, parameter control and access to student information including web access for parental inquiries.

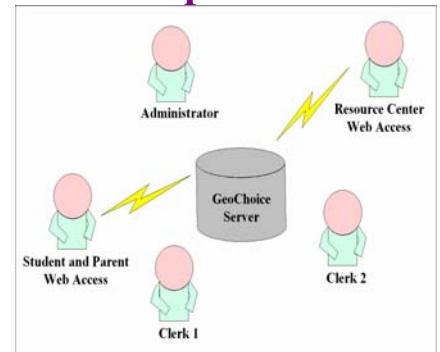
## Pupil Assignment Before and After GeoChoice:

### Before

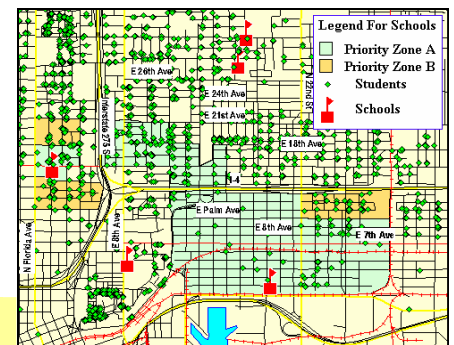
1. Do not offer School Choice.
2. Attempt to conduct choice manually.
3. Solicit the assistance of the PTA.
4. Request your MIS Department to develop a choice program.
5. Purchase a legacy application from?
6. Struggle to train your staff and the attending households to accept your approach.
7. Do the best you can and purchase **GeoChoice®** from International Computer Works, Inc.

### After

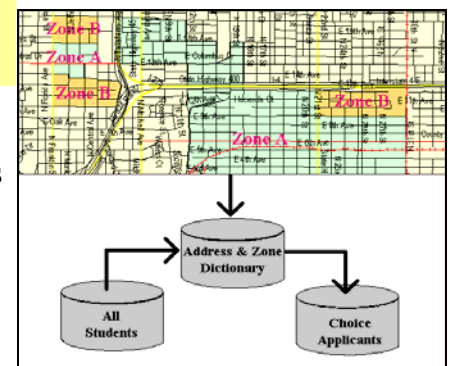
1. Open **GeoSchools®** and **TIGERUS®**.
2. GeoCode your students.
3. Define your geographic areas.
4. Set up your project in **GeoChoice®**.
5. Import the Dictionary and Students and set your parameters.
6. Set the links to your web page.
7. Have Clerks 1 and 2 enter the applications for choice.
8. Run choice and send out your offers.
9. Maintain either an applicant pool and or a wait list.



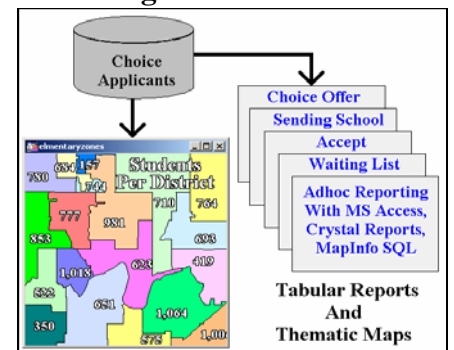
Multi-User With Security



Easy-to-use Mapping



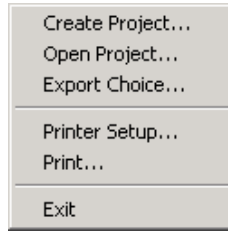
Integrated Data Sets



Reporting and Analysis

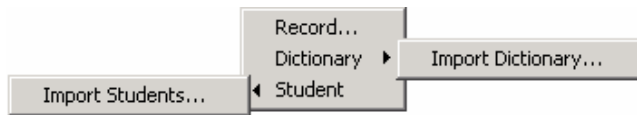
Following is a list of the items on the pull down menu for the Administrator. Included is an illustration of the pull down menu and a brief overview of the functionality for each option..

1. **File** Is the first pull down menu option from the **GeoChoice** main menu.



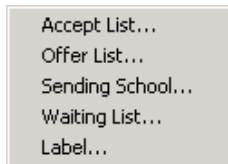
From this pull down the Administrator may execute the **Create Project** function, which will be performed for each academic year. All users may access the **Open Project** function which will open the project designated through the **Setup>Project** command sequence by the Administrator. The **Export Choice** function will save a copy of the choice students table to a location specified by the Administrator. The **Printer Setup** and **Print** functions assist the user in managing printing tasks. The **Exit** function closes the **GeoChoice** application.

2. **Edit** Provides the Administrator with access to discrete functions contained in the **Edit** pull down menu.

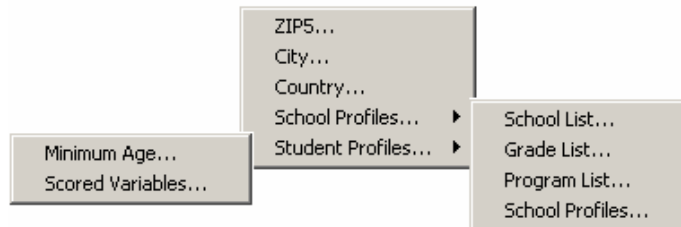


Access to a single record for editing can be accomplished through the **Record** option. The **Import Dictionary** function permits the Administrator the ability to bring in a new dictionary generated from the **GeoSchools** application. The **Import Students** function updates the student database with the most current listing of students in the district database.

3. **Report** Provides the Administrator with a list of standard reports that can be selected from the pull down menu option.

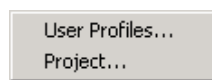


4. **Parameters** Represents the key feature of **GeoChoice** to meet the divergent needs of communities over time. The expanded pull down menu for **Parameters** is illustrated below.



The **ZIP5**, **City** and **Country** options provide an interface for building a list of 5 digit ZIP Codes, Cities and Countries that will be used during the data entry process. The **School Profiles** and **Student Profiles** present the Administrator with the functionality to define lists used during data entry, variables used to assign points to a choice candidate's score and other values that are used to allocate attendance offers to candidates.

5. **Setup** Through the menu options contained in the Setup pull down menu the Administrator can control user names and privileges for each of the three categories of application user (i.e. Clerk1, Clerk2 and Administrator). Additionally, the Administrator can point all of the users to the current project.



6. **Help** From the Help menu the user can access the **About** function illustrated in Figure 9. The **About** option contains information pertaining to the currently installed version of **GeoChoice**.

