

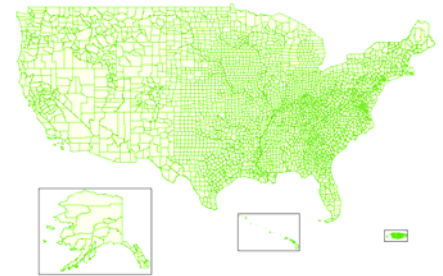
Introducing USDMA[®]



Nation Wide Mapping

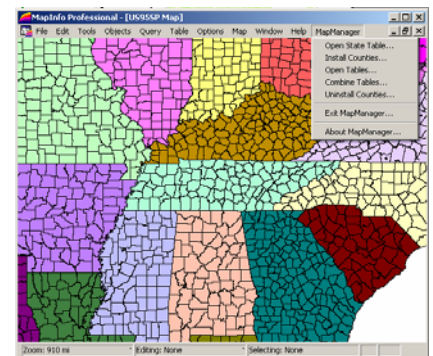
Offers economy for national data with single and multi-user licenses.

USDMA[®] from International Computer Works, offers the most economical means for providing a ready-to-use digital library of intelligent map layers for your organization. This digital map atlas consists of eight CD ROM disks, each containing directories which represent a state or territory. With in each directory there are subdirectories for each county, parish, municipio or district. With in each county or county equivalent subdirectory there are up to 41 layers of map data represented by points, lines, or regions (single polygons or multiple polygons).



Coast-to-Coast and more

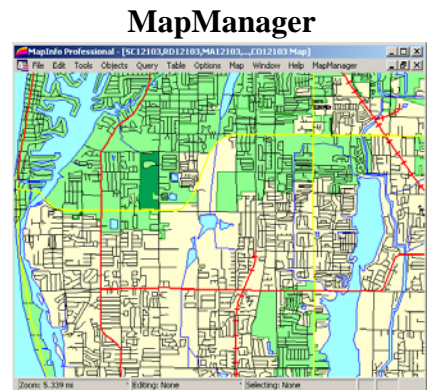
USDMA[®] includes MapManager and the ICW GeoCoder which provide you with greater ease-of-use in the creation of regional or state-wide maps and the means to geocode data across larger areas of geography. Also included are nation wide maps of USGS grids reference grids and State Plane Zones for each county or county equivalent.



The USGS maps include grids for the 7.5 minute quadrangles and the 1 to 100,000 scale series. The USGS name for each grid is included for both scales which is helpful for researching USGS data.

The State Plane Zones provide a reference system for determining the State Plane Zone to use for converting map data created in a GIS format other than TAB using the MapInfo Universal Translator.

Designed for ease-of-use, the USDMA[®] is strategically positioned to help you use the power of US Census TIGER/Line Files in MapInfo format to link with your data or external demographics.



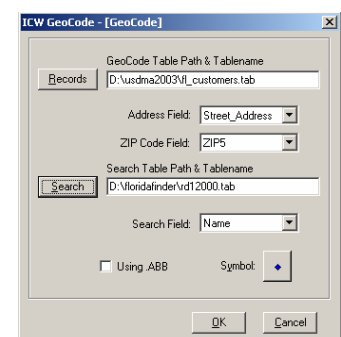
The USDMA[®] with ICW applications expand your power: **MapManager** **GeoCode**

Provides an easy-to-use interface with which to automate accessing and managing map tables. The **USDMA** consists of 8 CDRoms containing in excess of 20 GB of data when uncompressed.

The left and right side 5 digit ZIP Code is included as an attribute in the road data provided with the **USDMA[®]**. With the ZIP Code and the ICW GeoCoder you can geocode to roads in counties that have repeated names and address ranges or across an entire state or region. The 5 digit ZIP Code provides the level of differentiation needed to geocode the record to the correct location.

- MapManager**, will help you to:
1. Install State and County tables
 2. Combine county tables to create state or regional tables
 3. Uninstall County tables.

Create Beautiful Maps



GeoCode State Wide

USDMA[®] offers economy at a national scale!

International Computer Works, Inc.

111 South Riverhills Drive
Temple Terrace, FL 33617-7221

USDMA[®]

www.icwmaps.com

TEL (813) 988-0434
FAX (813) 985-5661

Map Layer Inventory List and Naming Convention

The first two characters in every map table identify the feature that is mapped. The next two characters are the state FIPS code and the last three characters are the county FIPS code. This naming convention permits a unique name for every feature for every county and state in the **ICW US Digital Map Atlas**.

1.	Roads	RD			
2.	Alternative Features	In Roads			
3.	Major Roads	MA			
4.	Secondary Roads	SC			
5.	Airport and Railroads	AR			
6.	H2o Linear	H2			
7.	Misc. Ground Transportation	SP			
8.	Water Polygons	WA			
9.	2000 Blocks	BL			
10.	2000 Block Groups	BG			
11.	2000 Tracts	TR			
12.	Place	PL			
13.	County	CO			
14.	Urbanized Area and Clusters	UA			
15.	MSA/CMSA	MS			
16.	PMSA	PM			
17.	Public Use Microdata Areas (PUMA)	PU			
18.	ZIP Code Tabulation Areas (ZCTA)	ZC			
19.	Voting Districts	VO			
20.	State House Districts	DL			
21.	State Senate Districts	DU			
22.	108th Congressional	C8			
23.	Elementary School Districts	EL			
24.	Secondary School Districts	SE			
25.	Unified School Districts	UN			
26.	Indian Reservation	RE			
27.	Alaskan Native Lands	AN			
28.	Hawaii Home Lands	HH			
29.	Oregon Urban Growth Areas	UG			
30.	Minor Civil Divisions (MCD)	MC			
31.	Sub MCDs	SM			
32.	Core Based Statistical	CB			
33.	Combined Statistical Area	CS			
34.	New England City and Town	NC			
35.	Combined New England City Town	CN			
36.	New England City and Town Division	ND			
37.	Metropolitan Division	MD			
38.	ZIP+4 CENTROIDS	ZP			
39.	Landmark Polygons	LP			
40.	Landmark Points	LA			
41.	Traffic Analysis Zones (TAZ)	TZ			